

# MONTHLY MEMBERSHIP PROGRESS REPORT

District 19 I

Results as of: 5/31/2026

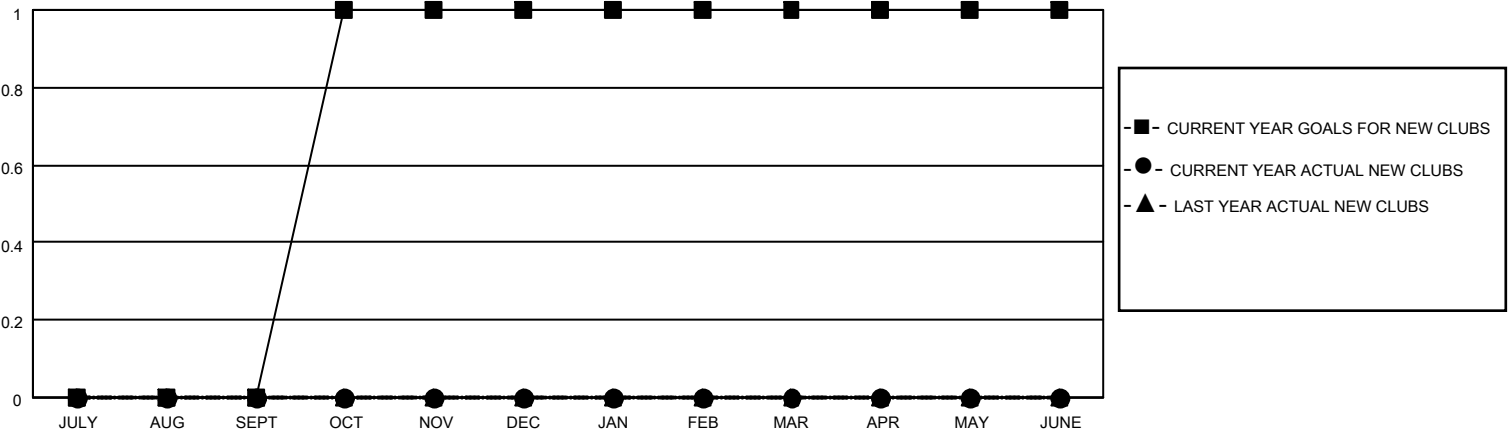
GMT:

LOCATION BRITISH COLUMBIA

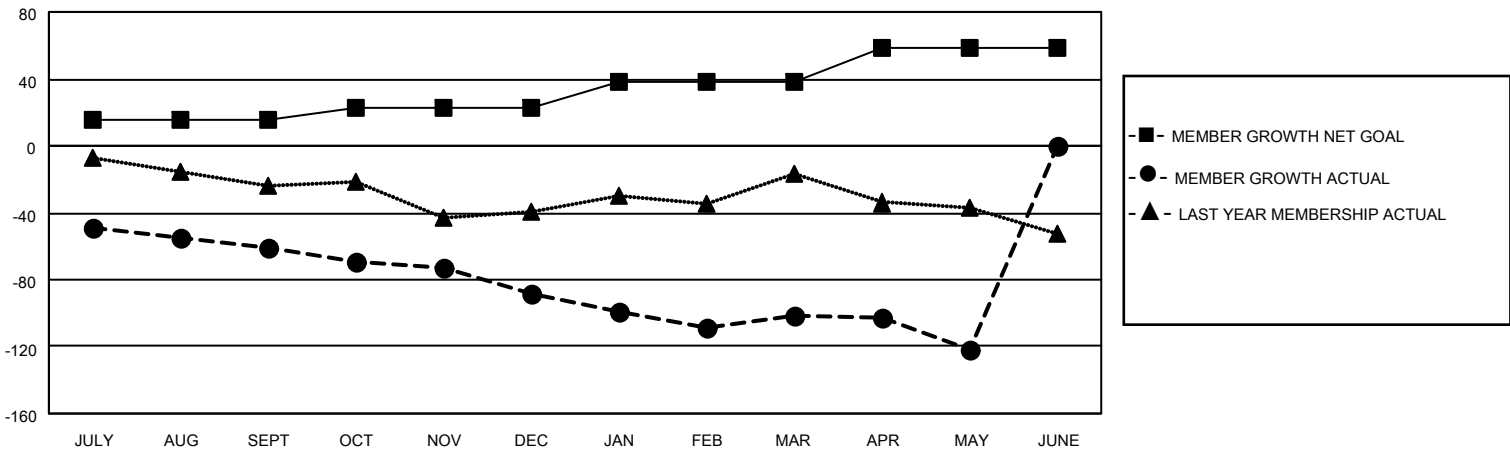
GMT CA

Clubs				Members			
RESULTS FOR 2025-2026				RESULTS FOR 2025-2026			
QUARTER	NEW CLUB GOAL	NEW CLUBS	DROPPED CLUBS	QUARTER	MEMBER GROWTH NET GOAL	MEMBER GROWTH ACTUAL	DROPPED MEMBERS ACTUAL (including transfers)
JULY/AUG/SEPT	0	0	1	JULY/AUG/SEPT	15	35	92
OCT/NOV/DEC	1	0	0	OCT/NOV/DEC	8	16	36
JAN/FEB/MAR	0	0	0	JAN/FEB/MAR	15	39	49
APR/MAY/JUNE	0	0	1	APR/MAY/JUNE	20	27	45

GOALS AND ACTUAL NEW CLUBS CUMULATIVE



GOALS AND ACTUAL MEMBERS CUMULATIVE



DROPPED CLUBS: 2	38 CLUBS OF 59 ADDED 1 OR MORE NEW MEMBERS	<b>GENDER DISTRIBUTION</b> MALE 641 (50.79%) FEMALE 621 (49.21%)
<b>DROPPED MEMBERS</b> DECEASED 20 CLUB CANCELLED 47 OTHER 155 TOTAL 222	<a href="#">CLICK HERE FOR CUMULATIVE MEMBERSHIP DATA</a>	TOTAL FAMILY UNIT MEMBERS 347 FAMILY MEMBERS PAYING HALF DUES 174